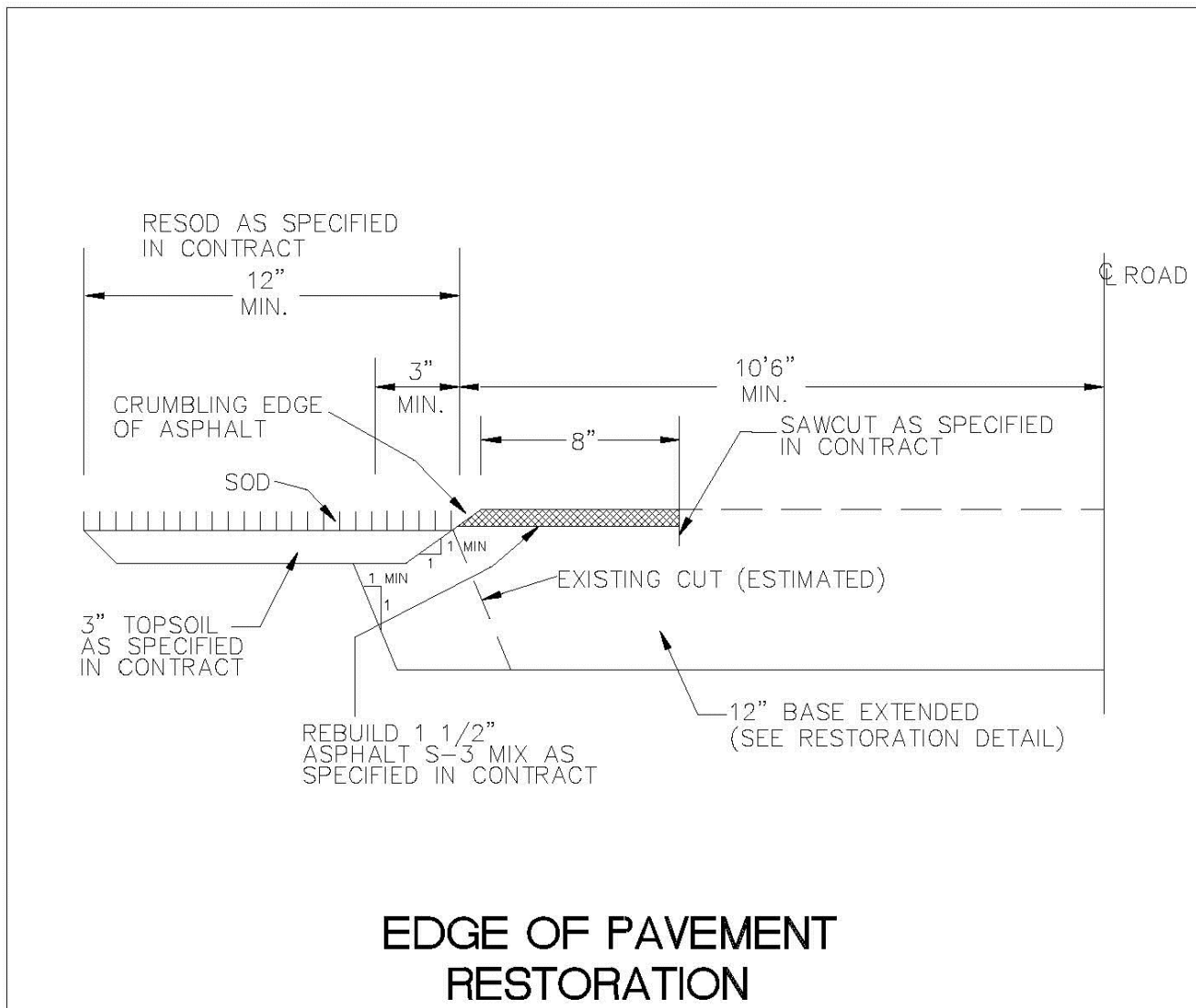
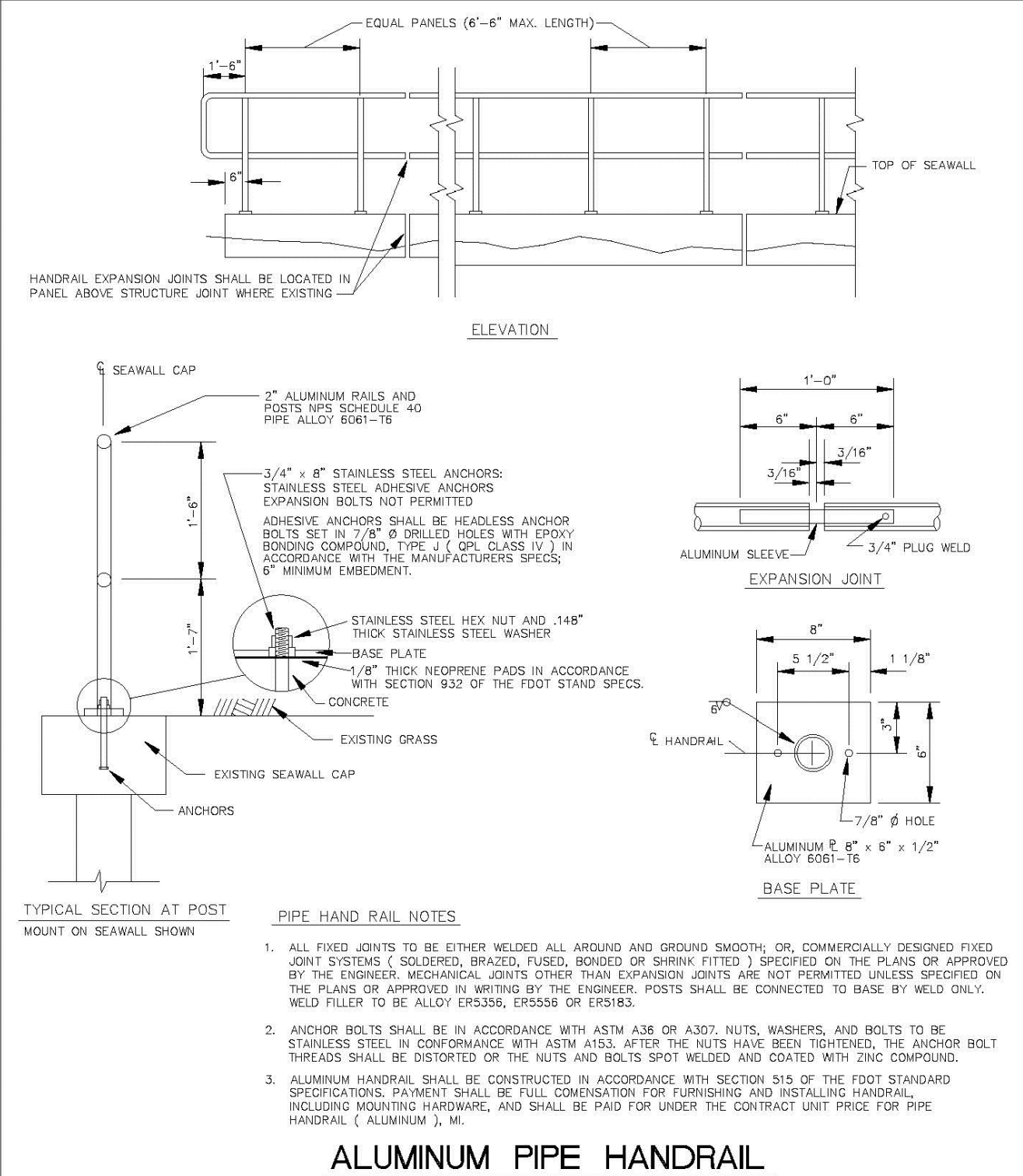


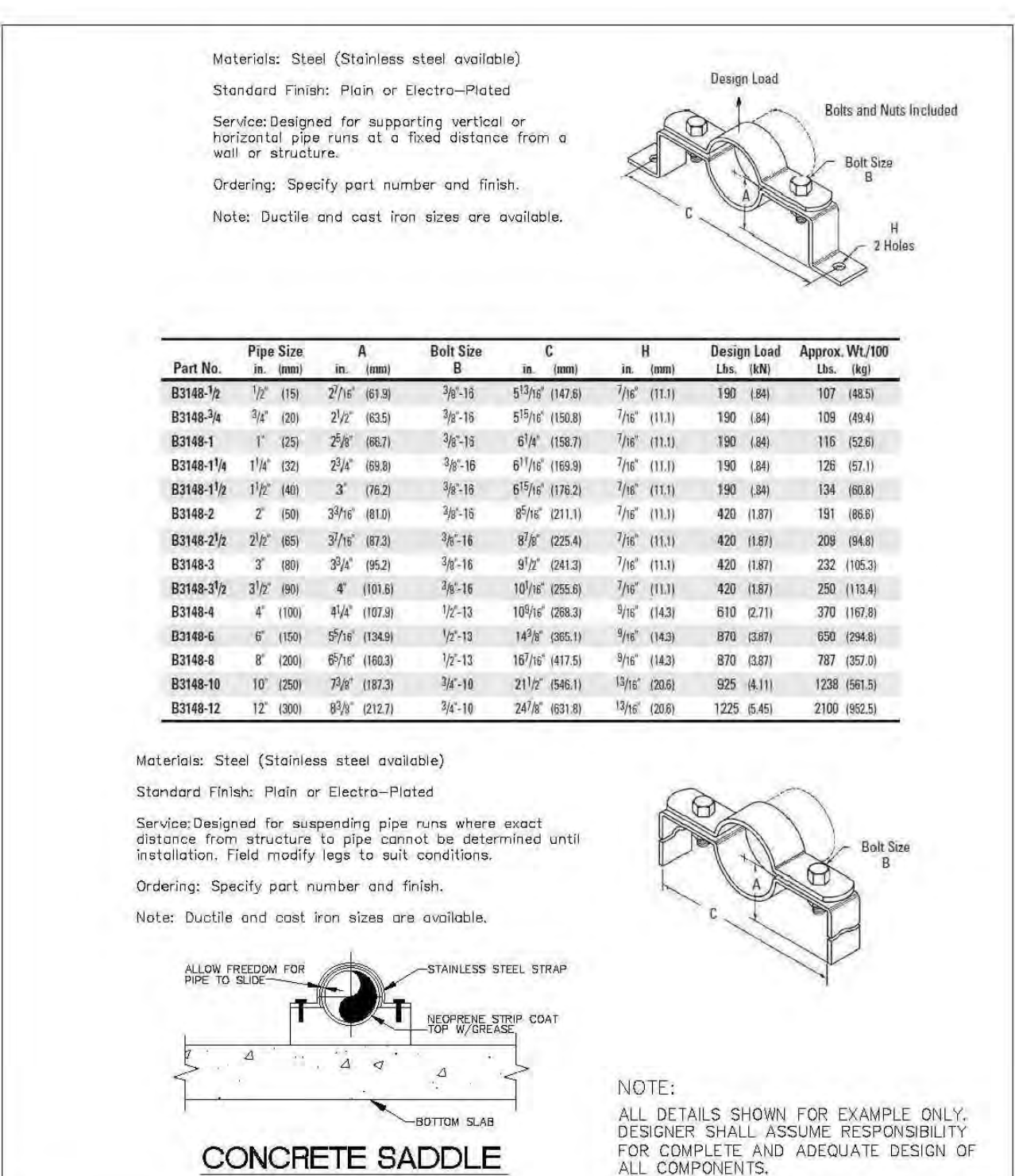
DRC  
PZ23-12000017  
11/20/2024



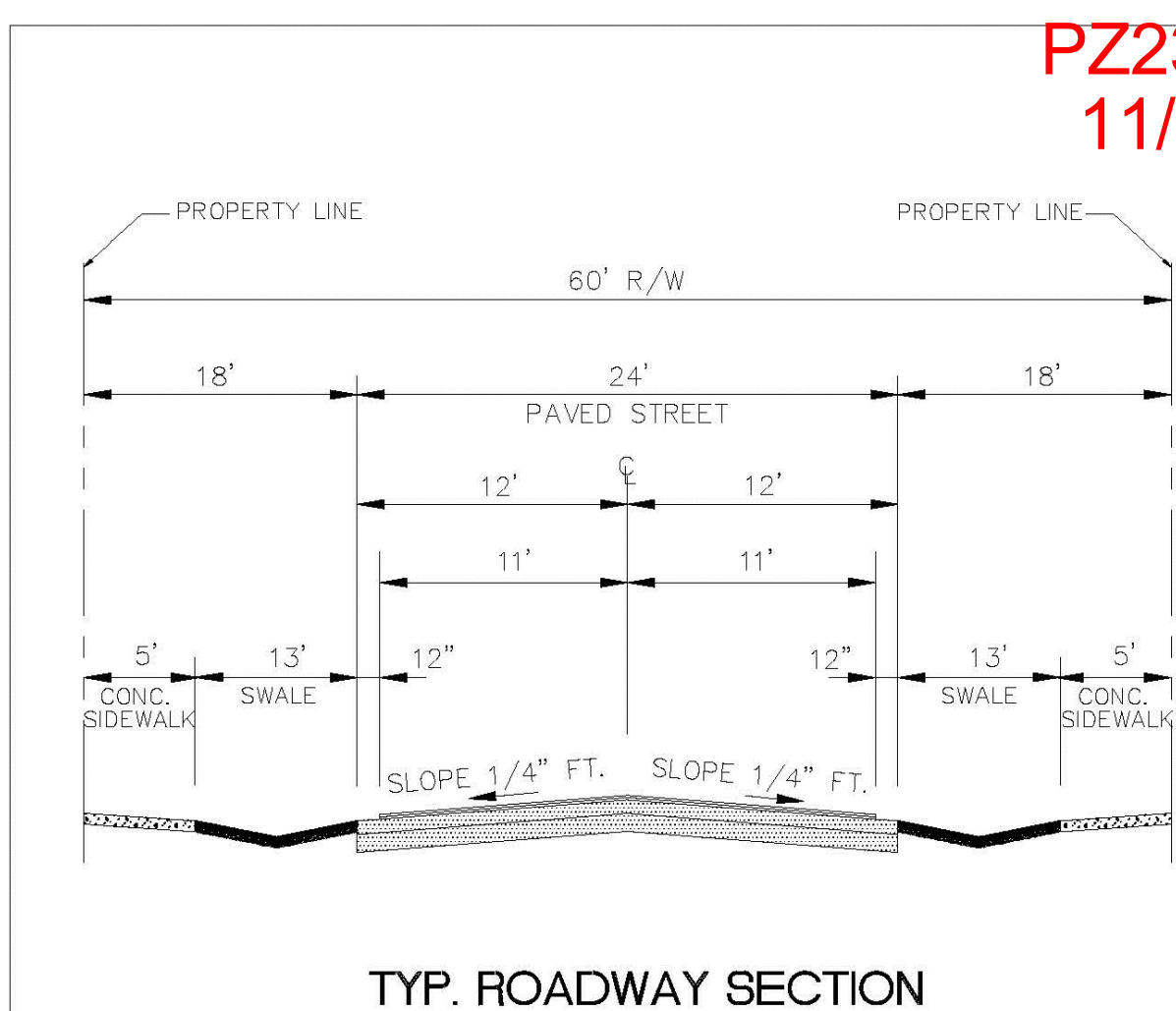
ENGINEERING STANDARDS 2022		
REVISIONS	ENGINEERING DIVISION	EDGE OF PAVEMENT RESTORATION
BY DATE	CITY OF POMPAÑO BEACH	
	SCALE: N.T.S.	DATE: MAY 2022 DWG. NO. 306-4



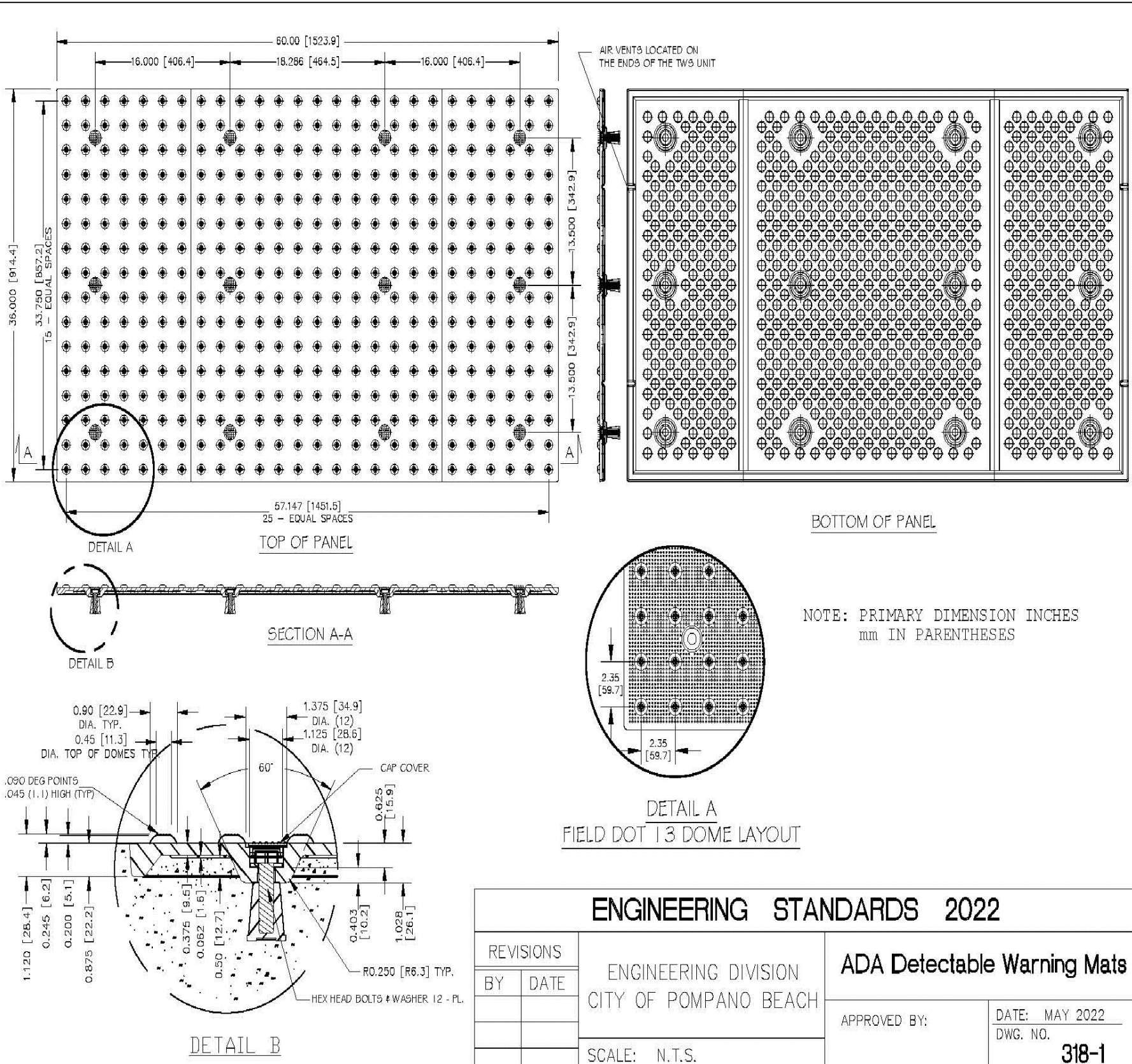
ENGINEERING STANDARDS 2022		
REVISIONS	ENGINEERING DIVISION	ALUMINUM PIPE HANDRAIL
BY DATE	CITY OF POMPAÑO BEACH	
S.S. 1/31/12	SCALE: N.T.S.	DATE: MAY 2022 DWG. NO. 308-1



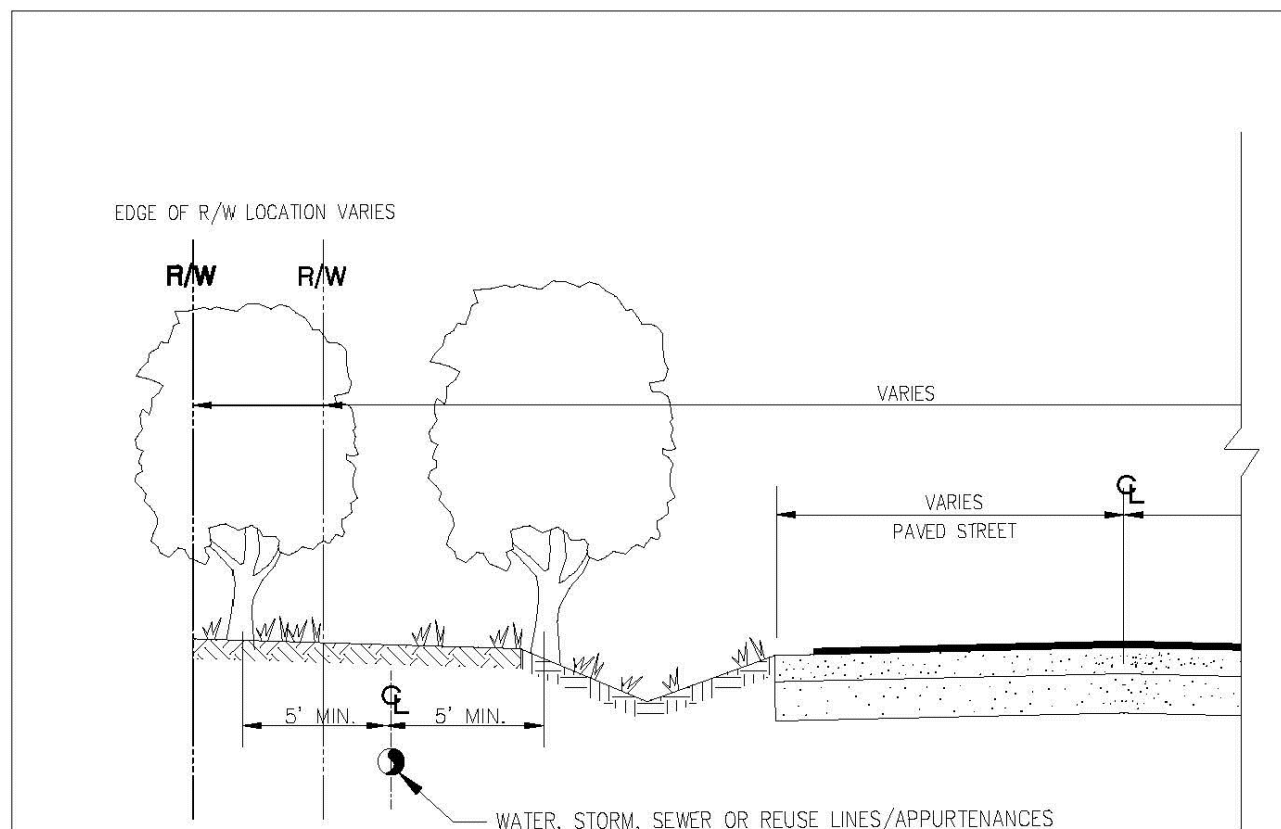
ENGINEERING STANDARDS 2022		
REVISIONS	ENGINEERING DIVISION	PIPE STRAPS DETAILS
BY DATE	CITY OF POMPAÑO BEACH	
	SCALE: N.T.S.	DATE: MAY 2022 DWG. NO. 310-3



ENGINEERING STANDARDS 2022		
REVISIONS	ENGINEERING DIVISION	TYP. ROADWAY SECTION
BY DATE	CITY OF POMPAÑO BEACH	
	SCALE: N.T.S.	DATE: MAY 2022 DWG. NO. 314-1



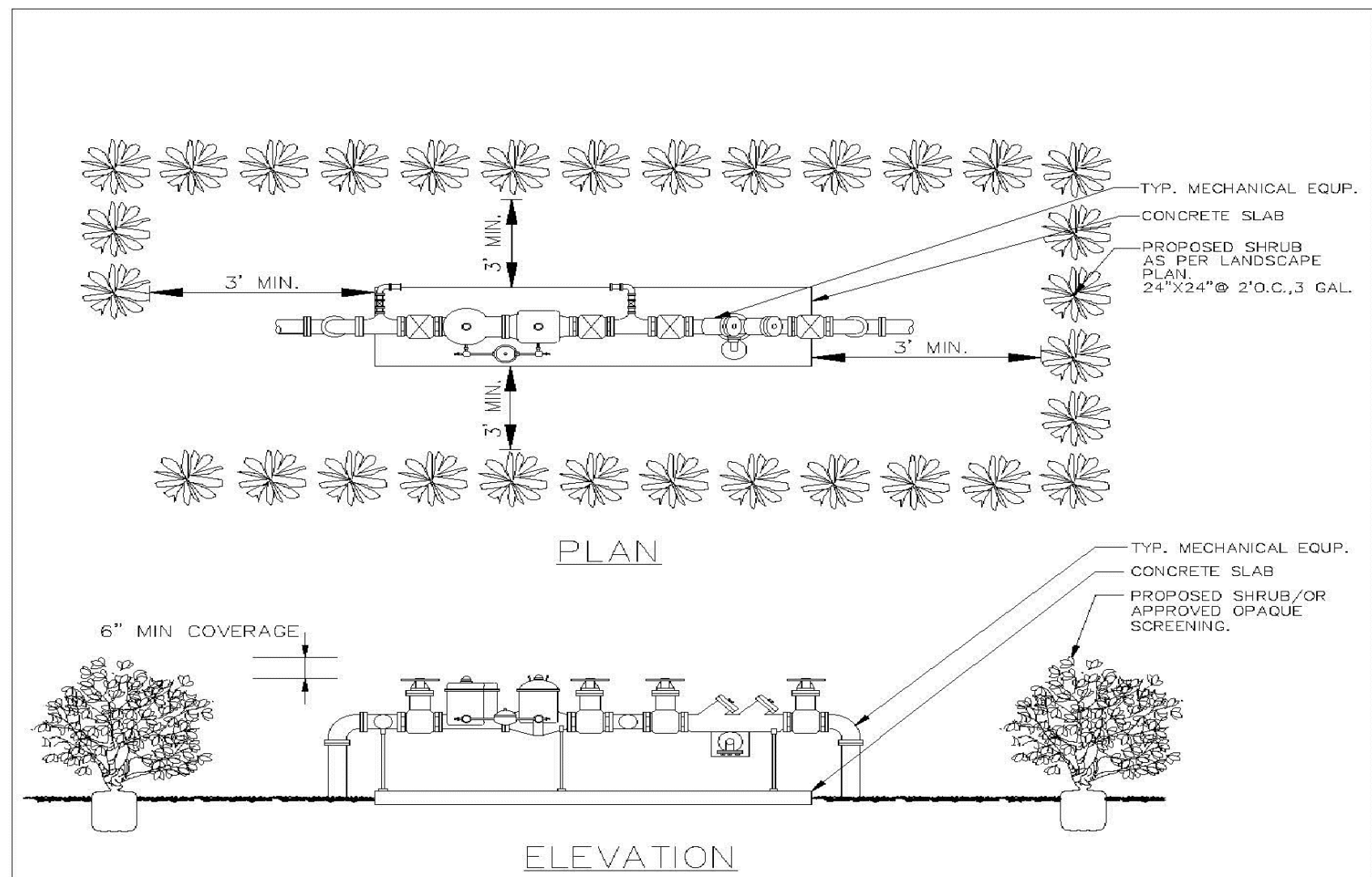
ENGINEERING STANDARDS 2022		
REVISIONS	ENGINEERING DIVISION	ADA Detectable Warning Mats
BY DATE	CITY OF POMPAÑO BEACH	
	SCALE: N.T.S.	APPROVED BY: DATE: MAY 2022 DWG. NO. 318-1



### TREE LOCATIONS REQUIRED IN PUBLIC R/W ON UTILITY EASEMENTS

NOTES  
PLEASE NOTE THAT AS PER CITY ORDINANCE(S) 50.02(A) (4) AND 100.35(E), STREET TREES SHALL NOT BE PLACED ON TOP OF OR 5' OF EITHER SIDE OF ANY CITY OWNED UTILITY INFRASTRUCTURE. ALSO, PLEASE NOTE THAT NO TREES SHRUBBERY OR OBSTRUCTION SHALL BE PLACED WITHIN A 3' RADIUS OF A CITY OWNED LATERAL CLEANOUT OR WATER & OR REUSE METER.

ENGINEERING STANDARDS 2022		
REVISIONS	ENGINEERING DIVISION	REQUIRED TREE LOCATIONS
BY DATE	CITY OF POMPAÑO BEACH	
	SCALE: N.T.S.	APPROVED BY: DATE: MAY 2022 DWG. NO. 316-1



### TYPICAL SCREEN FOR UTILITIES

NOTES  
PLEASE NOTE THAT AS PER CITY ORDINANCE(S) 50.02(A) (4) AND 100.35(E), STREET TREES SHALL NOT BE PLACED ON TOP OF OR 5' OF EITHER SIDE OF ANY CITY OWNED UTILITY INFRASTRUCTURE. ALSO, PLEASE NOTE THAT NO TREES SHRUBBERY OR OBSTRUCTION SHALL BE PLACED WITHIN A 3' RADIUS OF A CITY OWNED LATERAL CLEANOUT OR WATER & OR REUSE METER.

ENGINEERING STANDARDS 2022		
REVISIONS	ENGINEERING DIVISION	TYPICAL SCREEN FOR UTILITIES
BY DATE	CITY OF POMPAÑO BEACH	
TCW APRIL 2010	SCALE: N.T.S.	APPROVED BY: DATE: MAY 2022 DWG. NO. 315-1

CAULFIELD & WHEELER, INC.  
CIVIL ENGINEERING - LAND PLANNING  
LANDSCAPE ARCHITECTURE - SURVEYING  
7900 GLADES ROAD - SUITE 100  
BOCA RATON, FLORIDA 33434  
PHONE (561)-392-1991 / FAX (561)-750-1452

OAKS @ PALM AIRE  
PAVING, GRADING,  
& DRAINAGE DETAILS  
POMPAÑO BEACH, FLORIDA

DATE 12/27/2023  
DRAWN BY RHT  
F.B./ PG. N/A  
SCALE N.T.S.

RYAN D. WHEELER  
PROFESSIONAL ENGINEER  
LICENSE NO. 71477  
STATE OF FLORIDA  
FOR THE FIRM -  
DATE

JOB #10326  
SHT. NO.  
PD.07  
OF 7 SHEETS